

# Task Booklet Year 7 Science



# Space



Student Name:

Teachers name:

Core

Solar System

The time it takes for a planet to go round the Sun is a year. An Earth year is 365 days long (this is how long it takes the Earth to go once round the) Sun.

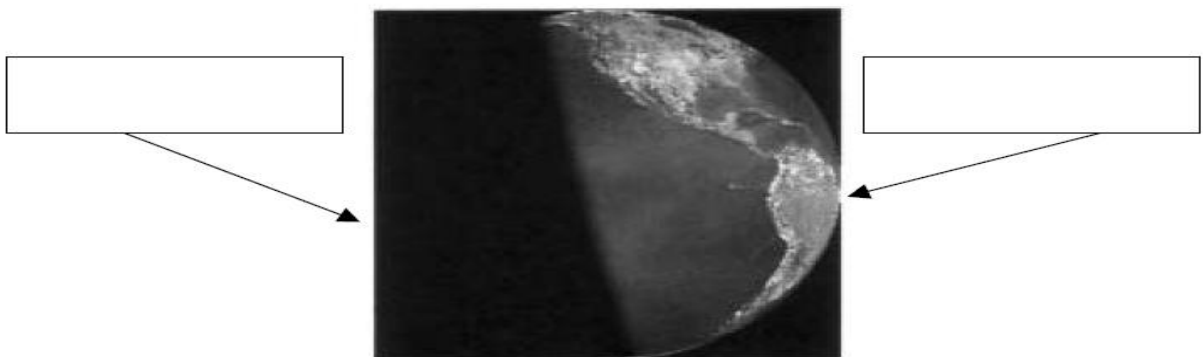
**1.2.** How old are you (in Earth years!)?

Fill in the table below to show how many birthdays you would have had on other planets:

<i>planet</i>	<i>length of a year (in Earth years)</i>	<i>number of birthdays</i>
Earth	1.00	
Mercury	0.24	
Mars	1.90	
Jupiter	11.90	
Uranus	84.00	
Venus	0.64	

Standard

- Mooji was born on Uranus and has just had her third birthday. How old is she in Earth years?  
\_\_\_\_\_
- The picture shows the Earth from space. Label it showing day and night.



- How long does it take for the Earth to rotate once on its own axis?  
\_\_\_\_\_

- Why do we get day and night time on Earth?  
\_\_\_\_\_

Standard

Phases of the Moon

Link the diagrams of the phases of the moon with the correct sentences.



We can see all of one side of the moon. This is a **Full Moon**.



The dark side of the moon is facing us. We cannot see it. This is called a **New Moon**.



We can see half of the moon. This is called a **Half Moon**.



We can only see a small part of the Moon. We call this a **Crescent Moon**.



We can see most, but not all, of one side of the Moon. This is a **Gibbous Moon**.

**Planets**

Look at the table below. It shows information about the planets of the solar system.

	planet	size	mass	mean distance	orbit time
	(relative	(relative	from Sun to Earth)	to Earth)	
	(millions of km)				
inner planets	Mercury	0.4	0.05	58	88 days
	Venus	0.9	0.8	108	225 days
	Earth	1.0	1.0	150	365 days
	Mars	0.5	0.1	228	687 days
outer planets	Jupiter	11.0	318.0	778	12 years
	Saturn	9.4	95.0	1430	29 years
	Uranus	4.0	15.0	2870	84 years
	Neptune	3.8	17.0	4500	165 years
	Pluto	0.2	0.003	5900	248 years

1. Which planet is closest to the Sun?

\_\_\_\_\_

2. Which planet has the highest mass?

\_\_\_\_\_

3. Which planet has the least mass?

\_\_\_\_\_

4. Which planet takes the longest time to orbit the Sun?

\_\_\_\_\_

5. Complete the following sentence by crossing out the incorrect word in the brackets:

*The orbit time of the planets (increases / decreases) as the distance from the Sun increases.*

6. Make up a rhyme to help you remember the order of the planets. Start with the one nearest the Sun.

\_\_\_\_\_

\_\_\_\_\_